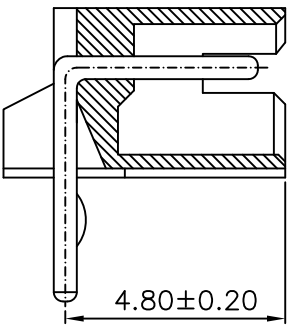
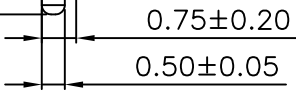
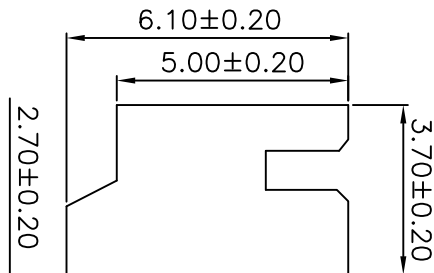
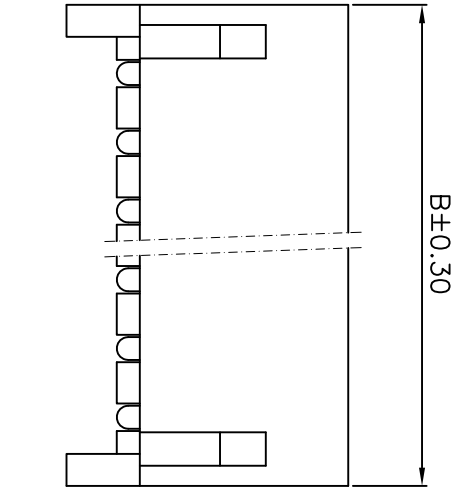


PCB LAYOUT



**SPECIFICATIONS**  
 Voltage rating: 100V AC, DC  
 Current rating: 1A, AC, DC (AWG#26)  
 Withstanding Voltage: 500V AC/minute  
 Insulation resistance: 500MΩ/min  
 Temperature range: -25°C - +85°C  
 Contact resistance: 20mΩ max

WAFER  
 Part No: SCT1501WR-XXPB-A  
 Poles: 02-16  
 Material: Nylon 66, UL94V-0  
 Q'TY: 1000 pcs/bag

PART NO	DIMENSION	
	A	B
SCT1501WR-02 PB	1.50	4.50
SCT1501WR-03 PB	3.00	6.00
SCT1501WR-04 PB	4.50	7.50
SCT1501WR-05 PB	6.00	9.00
SCT1501WR-06 PB	7.50	10.50
SCT1501WR-07 PB	9.00	12.00
SCT1501WR-08 PB	10.50	13.50
SCT1501WR-09 PB	12.00	15.00
SCT1501WR-10 PB	13.50	16.50
SCT1501WR-11 PB	15.00	18.00
SCT1501WR-12 PB	16.50	19.50
SCT1501WR-13 PB	18.00	21.00
SCT1501WR-14 PB	19.50	22.50
SCT1501WR-15 PB	21.00	24.00
SCT1501WR-16 PB	22.50	25.50

OPERATION	~ 10	±0.15	DRAW	Judy Huang	2006/05/02	SCALE	mm
DESIGN	20 ~ 30	±0.30	CHECK	Micky.Liu	2006/05/02	UNIT	A4
Angle	30 ~	±0.50	APPROVE	Hellen.Li	2006/05/02	SHEET	1/1
DIM	± 2'					PROJ.	
DATE	05/12/27		CHANGE			DRAWING NO.	SCT1501
REV	0	NEW	DESCRIPTION			TITLE:	ZH1.5 90C WF
			MODIFICATION				

**SCONDAR** 森康达电子有限公司  
 SCONDAR ELECTRONIC LIMITED

