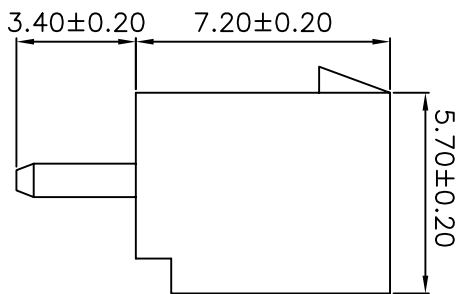
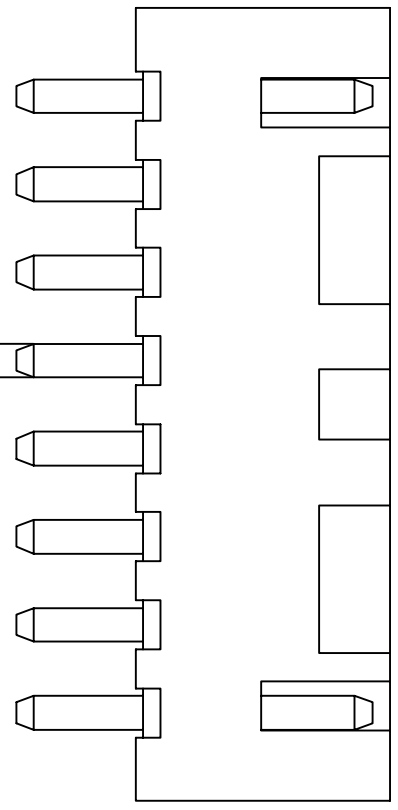


PCB LAYOUT



SPECIFICATIONS

Voltage Rating: 250V AC/DC  
 Current Rating: 3A AC/DC  
 Withstanding Voltage: 1000V AC/minute  
 Insulation Resistance: 1000MΩ min.  
 Temperature Range: -25° C - +85° C  
 Contact Resistance: 20mΩ max

WAFER  
 Part No: SCT2502WV-XXP  
 Poles: 2-16  
 Material: Nylon 66, UL94V-2  
 Pin: Brass, Tin plated

PART NO	DIMENSION	
	A	B
SCT2502WV-02	2.50	7.50
SCT2502WV-03	5.00	10.00
SCT2502WV-04	7.50	12.50
SCT2502WV-05	10.00	15.00
SCT2502WV-06	12.50	17.50
SCT2502WV-07	15.00	20.00
SCT2502WV-08	17.50	22.50
SCT2502WV-09	20.00	25.00
SCT2502WV-10	22.50	27.50
SCT2502WV-11	25.00	30.00
SCT2502WV-12	27.50	32.50
SCT2502WV-13	30.00	35.00
SCT2502WV-14	32.50	37.50
SCT2502WV-15	35.00	40.00
SCT2502WV-16	37.50	42.50

OPERATION	~ 10	±0.15	DRAW	CHENA	05/12/27	SCALE	mm	 森康达电子有限公司 SCONDAR ELECTRONIC LIMITED	
DESIGN	20 ~ 30	±0.30	CHECK	MICKY	05/12/28	UNIT	A4		
Angle	30 ~	±0.50	APPROVE	HELLEN	05/12/28	SIZE	1/1		
DATE	05/12/27	NEW	CHANGE			SHEET	1/1	PART NO.	SCT2502WV-XXP
REV	0	MODIFICATION DESCRIPTION	APPROVE			PROJ.		TITLE:	XA2.5 180C WAFER
1						DRAWING NO.			SCT2502