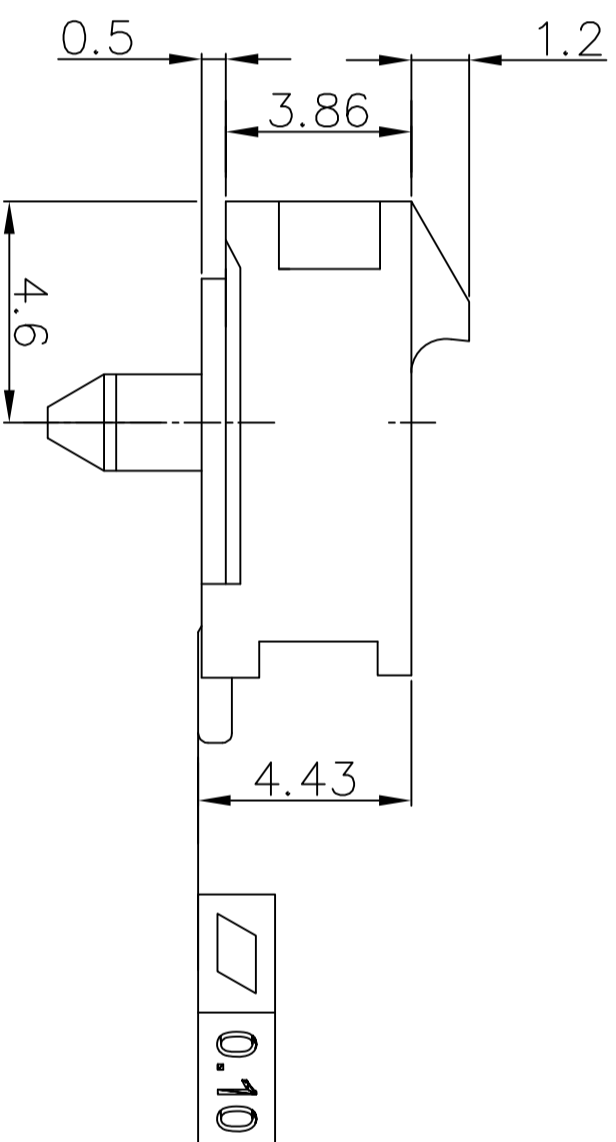
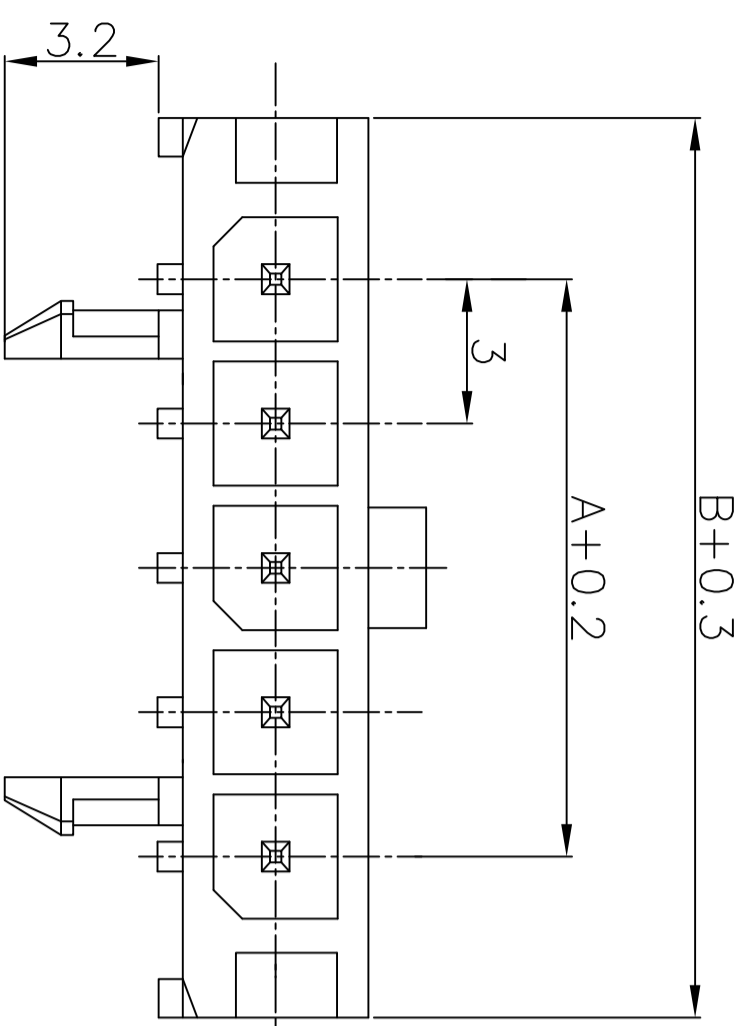


PCB LAYOUT



SPECIFICATIONS
 Voltage Rating: 250V AC/DC
 Current Rating: 5A AC/DC
 Withstanding Voltage: 1000V AC/minute
 Insulation Resistance: 1000MΩ min.
 Temperature Range: -25° C - +85° C
 Contact Resistance: 20mΩ max

WAFER
 Part No: SCT3001WR-S-E-XXP
 Poles: 2-12
 Material: LCP, UL94V-0
 Pin: Brass, Tin plated

PART NO.	Dimensions	
	A	B
SCT3001WR-S-2P	3.00	9.65
SCT3001WR-S-3P	6.00	12.65
SCT3001WR-S-4P	9.00	15.65
SCT3001WR-S-5P	12.00	18.65
SCT3001WR-S-6P	15.00	21.65
SCT3001WR-S-7P	18.00	24.65
SCT3001WR-S-8P	21.00	27.65
SCT3001WR-S-9P	24.00	30.65
SCT3001WR-S-10P	27.00	33.65
SCT3001WR-S-11P	30.00	36.65
SCT3001WR-S-12P	33.00	39.65

REV	DATE	MODIFICATION DESCRIPTION	CHANGE	APPROVE	OPERATION	DRAW	YANG	2016.04.27	SCALE	6:1	 森康达电子有限公司 SCONDAR ELECTRONIC LIMITED	
0	05/12/27	NEW			~ 10 ±0.25	DESIGN			UNIT	mm		
					20 ~ 30 ±0.30	CHECK	MICKY	2016.04.27	SIZE	A4		
					30 ~ Angle ±0.50	APPROVE	ALLEN	2016.04.27	SHEET	1/1		
					DIM ± 2'				PROJ.	☉	PART NO.	SCT3001WR-S-E-XXP
											TITLE:	MOLEX3.0 90C SMT WAFER
											DRAWING NO.	SCT3001