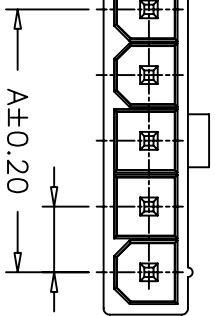
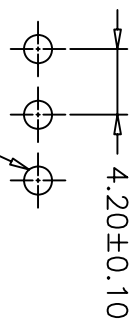


5.40±0.20

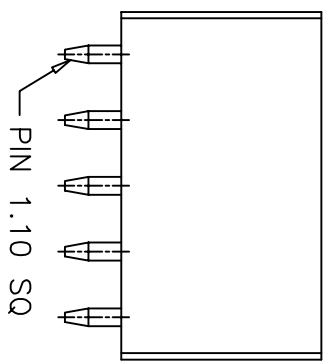


Ø1.80±0.05

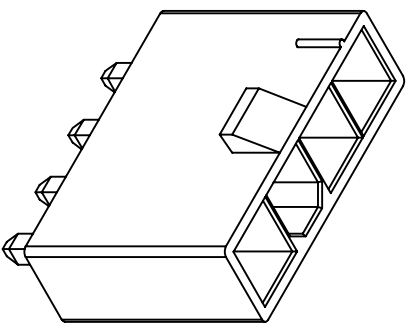
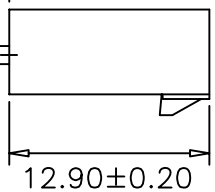


P.C.B LAYOUT

B±0.50



3.40±0.25



SPECIFICATIONS

Voltage Rating: 600V AC/DC
 Current Rating: 9A AC/DC
 Withstanding Voltage: 1500V AC/minute
 Insulation Resistance: 1000MΩ min.
 Temperature Range: -25° C - +85° C
 Contact Resistance: 20mΩ max

WAFER

Part No: SCT4201WV-XXP
 Pole: 02-05
 Material: Nylon 66, UL94V-2
 Pin: Brass, Tin plated

PART NO.	Dimensions	
	A	B
SCT4201WV-02P	4.20	9.60
SCT4201WV-03P	8.40	13.80
SCT4201WV-04P	12.60	18.00
SCT4201WV-05P	16.80	22.20

OPERATION	~ 10	±0.15	DRAW	JUDY	2007.05.09	SCALE	
	20 ~ 30	±0.30	DESIGN			UNIT	mm
	30 ~	±0.50	CHECK	MICKY	2007.05.09	SIZE	A4
ANGLE	± 2'		APPROVE	HELLEN	2007.05.09	SHEET	1/1
DIM						PROJ.	◆

REV	DATE	MODIFICATION DESCRIPTION	CHANGE	APPROVE
0	05/12/27	NEW		

森康达电子有限公司 SCONDAR ELECTRONIC LIMITED	
PART NO.	SCT4201WV-XXP
TITLE:	MOLEX4.2 180C WAFER
DRAWING NO.	SCT4201