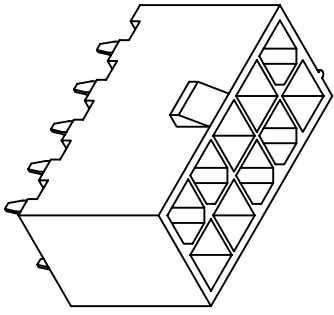
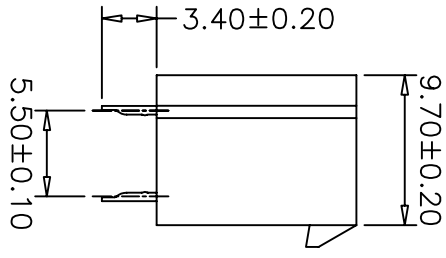
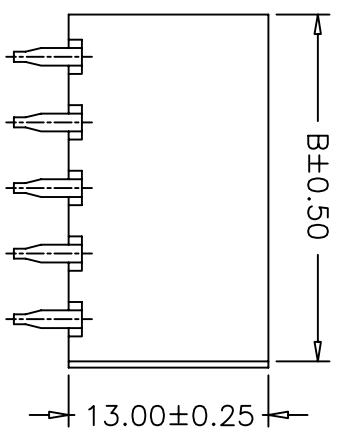


P.C.B LAYOUT



PART NO.	Dimensions	
	A	B
SCT4201WVA-2X01P	----	5.40
SCT4201WVA-2X02P	4.20	9.60
SCT4201WVA-2X03P	8.40	13.80
SCT4201WVA-2X04P	12.60	18.00
SCT4201WVA-2X05P	16.80	22.20
SCT4201WVA-2X06P	21.00	26.40
SCT4201WVA-2X07P	25.20	30.60
SCT4201WVA-2X08P	29.40	34.80
SCT4201WVA-2X09P	33.60	39.00
SCT4201WVA-2X10P	37.80	43.20
SCT4201WVA-2X11P	42.00	47.40
SCT4201WVA-2X12P	46.20	51.60

SPECIFICATIONS
 Voltage Rating: 600V AC/DC
 Current Rating: 9A AC/DC
 Withstanding Voltage: 1500V AC/minute
 Insulation Resistance: 1000MΩ min.
 Temperature Range: -25° C - +85° C
 Contact Resistance: 20mΩ max

WAFER
 Part No: SCT4201WVA-2XXXXP
 Pole: 2x1-12
 Material: Nylon 66, UL94V-2
 Pin: Brass, Tin plated

OPERATION	~ 10	±0.15	DRAW	JUDY	2007.05.09	SCALE	
	20 ~ 30	±0.30	DESIGN			UNIT	mm
	30 ~	±0.50	CHECK	MICKY	2007.05.09	SIZE	A4
Angle			APPROVE	HELLEN	2007.05.09	SHEET	1/1
DIM		± 2'				PROJ.	◆
DATE	05/12/27		CHANGE			DRAWING NO.	SCT4201
REV	0		MODIFICATION DESCRIPTION	NEW			

SCONDAR 森康达电子有限公司
 SCONDAR ELECTRONIC LIMITED

PART NO. SCT4201WVA-2XXXXP
 TITLE: MOLEX4.2 180C WAFER